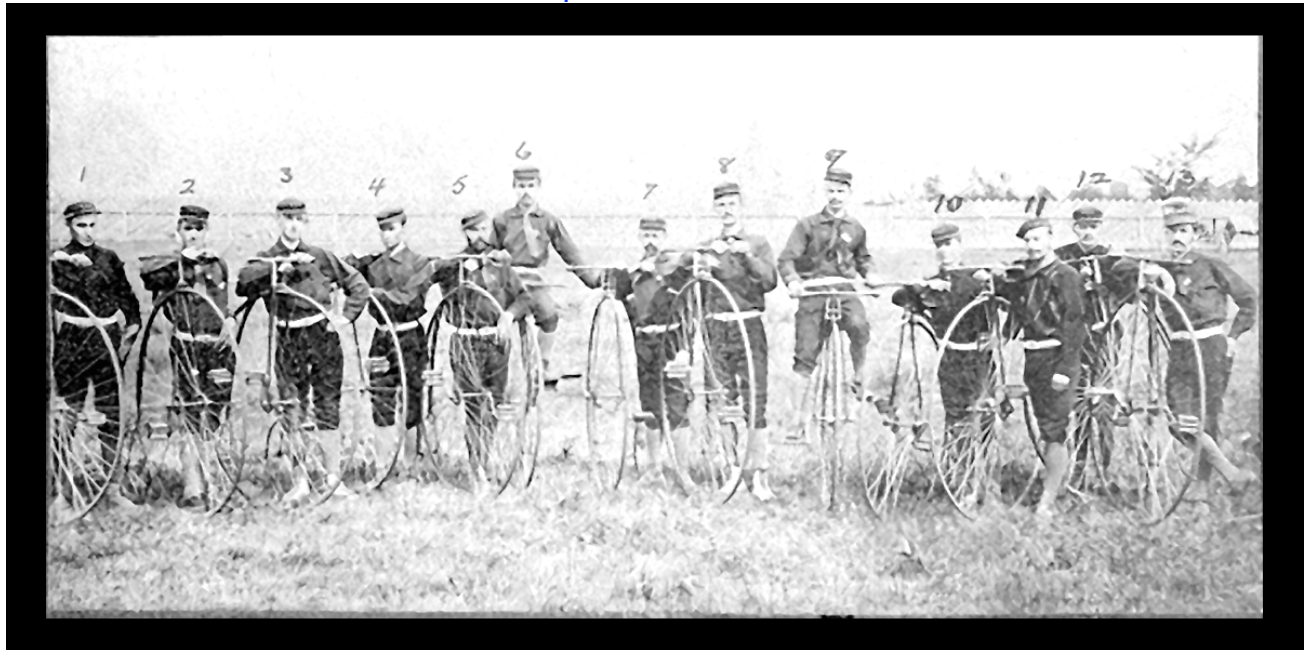




## **WE NEED YOUR UNNEEDED BIKES**

***R Community Bikes is a grassroots, 501(c)3 organization that collects and repairs used bicycles for distribution, free of charge, to Rochester Area's most needy children and adults.***

In all of 2008, we gave out 700 bikes; but in this year, we've already given out 500 bikes, with a long summer season still to go and with every indication that demand is on the increase. Every day that we're open to the public, we arrive at work to find 20 or 30 people waiting for bikes, many of whom we have to turn away. We've exhausted the supply of repaired bikes that we stockpiled over the winter.



## **WE WILL BE COLLECTING BICYCLES**

**SATURDAY • JUNE 27<sup>TH</sup>**

**AT "THE BIKE ZONE"**

**885 LONG POND ROAD IN GREECE**

**FROM 10 A.M. TO 2 :00 P.M**

**AND**

**SATURDAY • JULY 18<sup>TH</sup>**

**AT "PENFIELD FITNESS AND RACKET CLUB"**

**667 PANORAMA TRAIL WEST IN PENFIELD**

**FROM 10 A.M. TO 2 :00 P.M**

**R Community Bikes accepts any and all types of bikes, both children's and adult. Bikes with special value will be evaluated and possibly sold, with the proceeds going directly back into the program to purchase parts, supplies and tools, thus enabling our work to continue. Receipts are available upon request.**

**FOR MORE INFORMATION PLEASE GO TO [WWW.RCOMMUNITYBIKES.NET](http://WWW.RCOMMUNITYBIKES.NET)**

**OR E-MAIL AT [RCOMBIKES@YAHOO.COM](mailto:RCOMBIKES@YAHOO.COM)**